



Tests [Edit Test](#)

[Tests](#) [Groups](#) [Links](#)

Primary 5 Science (Term 2) - Tao Nan (2020)

[Add Questions](#) [Assign](#) [Settings](#) [Review](#)

[Duplicate](#) [Print](#) [Delete](#)

[Assign Test](#)

Test Introduction

[+ Add Introduction](#)

49 Questions (54 Points)

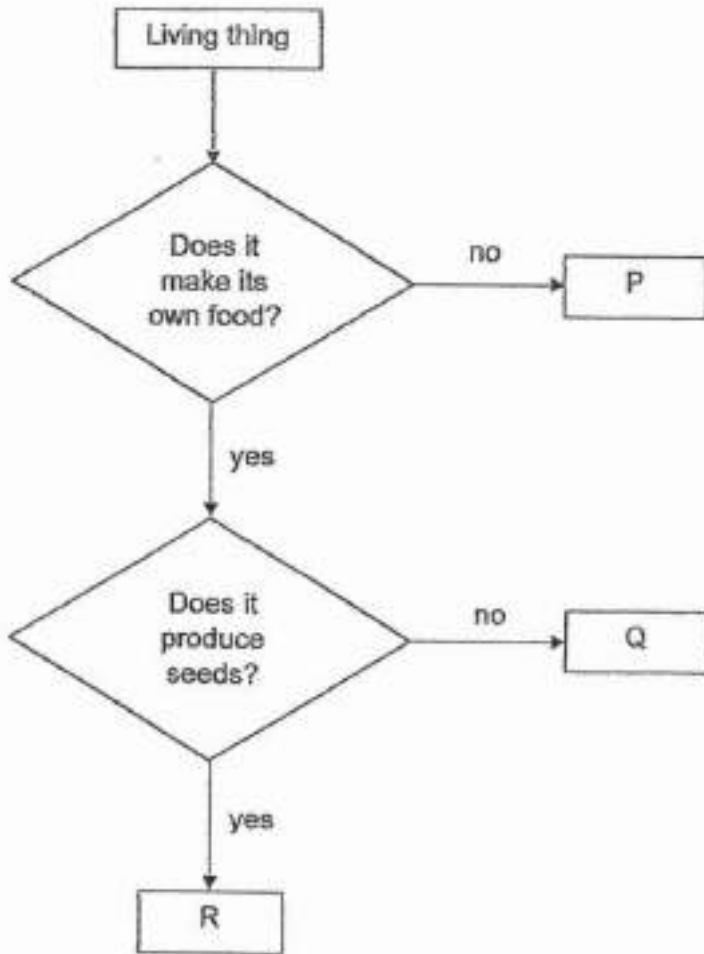
Question Bank: 9,275 Questions 

[Test Questions](#) [0 Test Assignments](#)

Question 1

Primary 5 Science » Primary 5 Science (Term 2) 2 pts

Study the chart below.



What could P, Q and R be?

- A)

| P | Q | R |
|----------|----------|-------|
| bacteria | mushroom | grass |
- B)

| P | Q | R |
|------|----------|----------|
| fern | bacteria | mushroom |
- ✓ C)

| P | Q | R |
|----------|------|-------|
| mushroom | fern | grass |
- D)

| P | Q | R |
|----------|------|----------|
| bacteria | fern | mushroom |

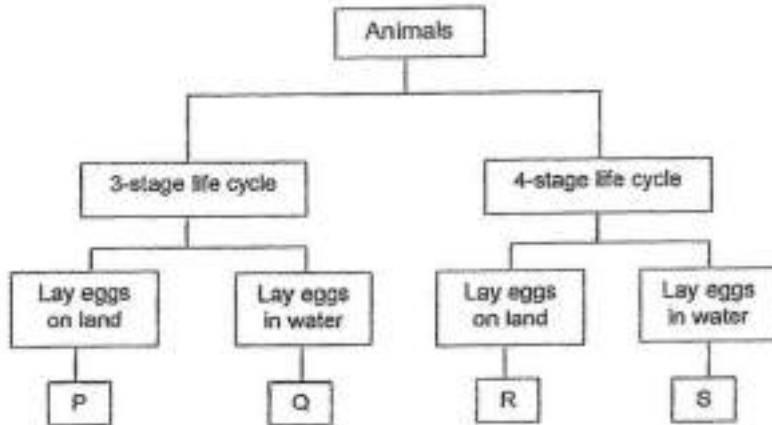
Question Type: Multiple Choice
Randomize Answers: No
Date Added: Fri 3rd Sep 2021
Last Modified: N/A
QID#: 28,903,119

Question 2

Primary 5 Science » Primary 5 Science (Term 2)

2 pts

Study the classification chart below.



Animal A lays eggs that hatch into young. The young of animal A has a breathing tube that enables it to breathe underwater. It eats and moults several times. The young then stops eating and during this period, it slowly changes into an adult.

Which group, P, Q, R or S, does animal A belong to?

- A) P
- B) Q
- C) R
- ✓ D) S

Question Type: Multiple Choice
Randomize Answers: No
Date Added: Fri 3rd Sep 2021
Last Modified: N/A
QID#: 28,903,121

Question 3

Primary 5 Science » Primary 5 Science (Term 2)

2 pts

Why do living things reproduce?

- A) To stay alive.
- B) To grow into an adult.
- ✓ C) To ensure the continuity of their species.
- D) To pass down characteristics to their young.

Question Type: Multiple Choice
Randomize Answers: No
Date Added: Fri 3rd Sep 2021
Last Modified: N/A

QID#: 28,903,124

[Answers](#) | [Edit](#) | [Duplicate](#) | [Used In](#) | [Reorder](#)
[Remove From Test](#)**Question 4**

Primary 5 Science » Primary 5 Science (Term 2)

2 pts

A group of students observed the growth of plant A over a few months. The plant did not bear flowers. They observed brown, powdery substance, X, that formed on the underside of the leaves.



Based on their observations, the students made the following statements. Which of the following statements is correct?

- A) X will attract pollinators.
- B) Plant A is too young to grow flowers.
- C) Plant A will not be able to reproduce.
- ✓ D) X ensures that the species of plant A continues to be found on Earth.

Question Type: Multiple Choice
Randomize Answers: No
Date Added: Fri 3rd Sep 2021
Last Modified: N/A
QID#: 28,903,126

[Answers](#) | [Edit](#) | [Duplicate](#) | [Used In](#) | [Reorder](#)
[Remove From Test](#)**Question 5**

Primary 5 Science » Primary 5 Science (Term 2)

2 pts

Which of the following characteristics is not passed down from the parent to their children?

- A) blood type
- B) shape of lips
- ✓ C) length of hair
- D) type of earlobe

Question Type: Multiple Choice
Randomize Answers: No
Date Added: Fri 3rd Sep 2021
Last Modified: N/A
QID#: 28,903,130

[Answers](#) |
 [Edit](#) |
 [Duplicate](#) |
 [Used In](#) |
 [Reorder](#)

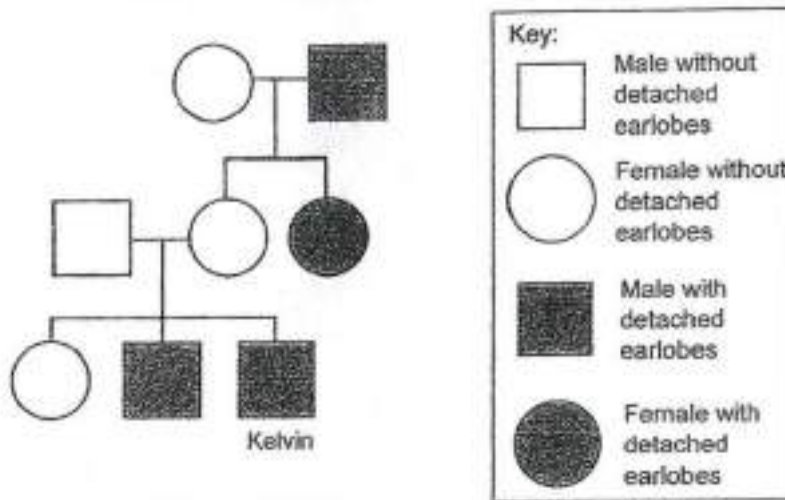
[Remove From Test](#)

Question 6

Primary 5 Science » Primary 5 Science (Term 2)

2 pts

The diagram below shows Kelvin's family tree.



Based on Kelvin's family tree, which statement is true?

- A) Kelvin's father has detached earlobes.
- ✓ B) Kelvin's brother has detached earlobes.
- C) Kelvin's grandmother has detached earlobes.
- D) Only males inherit the characteristic of detached earlobes.

Question Type: Multiple Choice
Randomize Answers: No
Date Added: Fri 3rd Sep 2021
Last Modified: N/A
QID#: 28,903,133

[Answers](#) |
 [Edit](#) |
 [Duplicate](#) |
 [Used In](#) |
 [Reorder](#)





[Remove From Test](#)

Question 7

Primary 5 Science » Primary 5 Science (Term 2)

2 pts

Damien grew some seeds of a plant on four trays, A, B, C and D. The experimental conditions and results are shown below.

| Tray | Soil | Location | Appearance of seeds on Day 5 |
|------|------|-----------------|---|
| A | wet | dark cupboard |  |
| B | dry | dark cupboard |  |
| C | wet | classroom table |  |
| D | dry | classroom table |  |

Based only on the results shown above, what can be concluded on the condition(s) needed for the germination of the seeds?

- ✓ A) Water is required.
- B) Warmth is required.
- C) Air, water and warmth are required.
- D) Light, water and warmth are required.

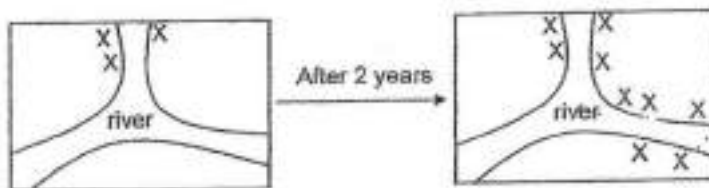
Question Type: Multiple Choice
 Randomize Answers: No
 Date Added: Fri 3rd Sep 2021
 Last Modified: N/A
 QID#: 28,903,135

[Answers](#) | [Edit](#) | [Duplicate](#) | [Used In](#) | [Reorder](#) [Remove From Test](#)

Question 8

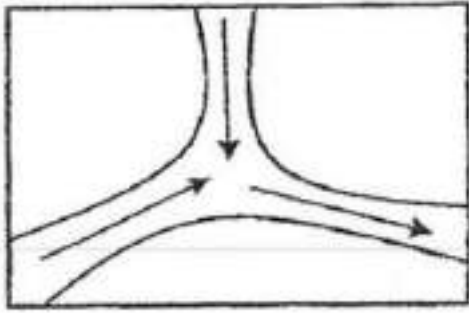
Primary 5 Science » Primary 5 Science (Term 2) 2 pts

It was observed that there were only 3 plant X growing along a river. After 2 years, the number of plant X increased to 9 as shown in the diagrams below. The seeds of plant X are dispersed by water only.

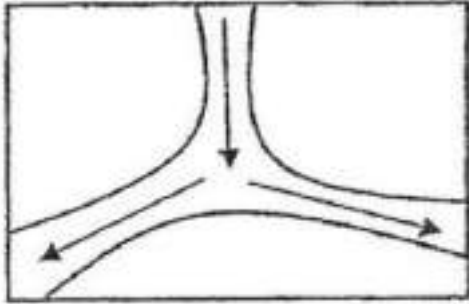


Which of the following shows the direction of the flow of the river?

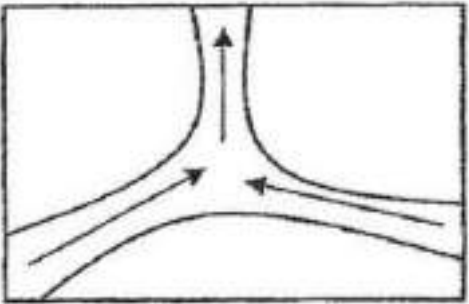
- ✓ A)



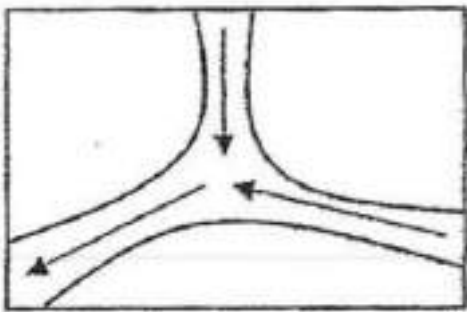
B)



C)



D)



Question Type: Multiple Choice
Randomize Answers: No
Date Added: Fri 3rd Sep 2021
Last Modified: N/A
QID#: 28,903,140

[Answers](#) | [Edit](#) | [Duplicate](#) | [Used In](#) | [Reorder](#)

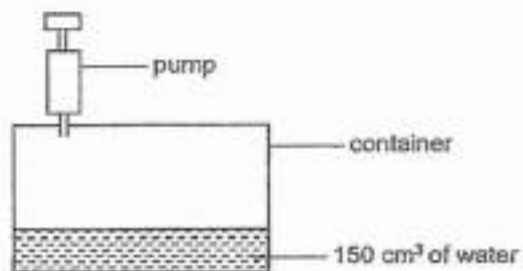
[Remove From Test](#)

Question 9

Primary 5 Science » Primary 5 Science (Term 2)

2 pts

The diagram below shows a sealed container with a capacity of 500 cm^3 connected to a pump. The container has 150 cm^3 of water.



50 cm^3 of water was then pumped into the container followed by 50 cm^3 of air.

What is the final volume of air inside the container?

- A) 250 cm^3
- ✓ B) 300 cm^3
- C) 350 cm^3
- D) 400 cm^3

Question Type: Multiple Choice
Randomize Answers: No
Date Added: Fri 3rd Sep 2021
Last Modified: N/A
QID#: 28,903,142

[Answers](#) |
 [Edit](#) |
 [Duplicate](#) |
 [Used In](#) |
 [Reorder](#)

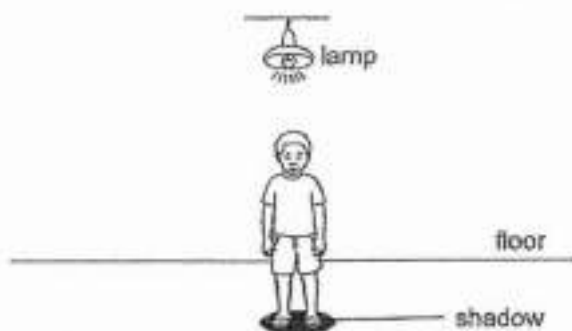
[Remove From Test](#)

Question 10

Primary 5 Science » Primary 5 Science (Term 2)

2 pts

A shadow was formed when Josh stood under a lamp as shown below.



Which of the following best explains how the shadow was formed?

- A) The lamp was a source of light.
- B) Light is reflected off Josh's body.
- C) Light was reflected off the floor and into Josh's eyes.
- ✓ D) Light travels in a straight line and could not pass through Josh.

Question Type: Multiple Choice
Randomize Answers: No
Date Added: Fri 3rd Sep 2021
Last Modified: N/A
QID#: 28,903,154

[Answers](#) | [Edit](#) | [Duplicate](#) | [Used In](#) | [Reorder](#)

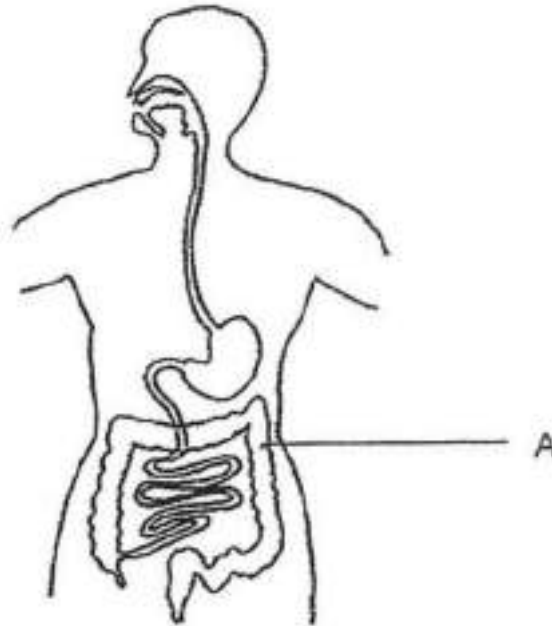
[Remove From Test](#)

Question 11

Primary 5 Science » Primary 5 Science (Term 2)

2 pts

The diagram below shows a human digestive system.



What is the function of A?

- A) To digest food.
- B) To break down food into smaller pieces.
- C) To pass digested food into the bloodstream.
- ✓ D) To remove water from the undigested food.

Question Type: Multiple Choice
Randomize Answers: No
Date Added: Fri 3rd Sep 2021
Last Modified: N/A
QID#: 28,903,160

[Answers](#) | [Edit](#) | [Duplicate](#) | [Used In](#) | [Reorder](#)

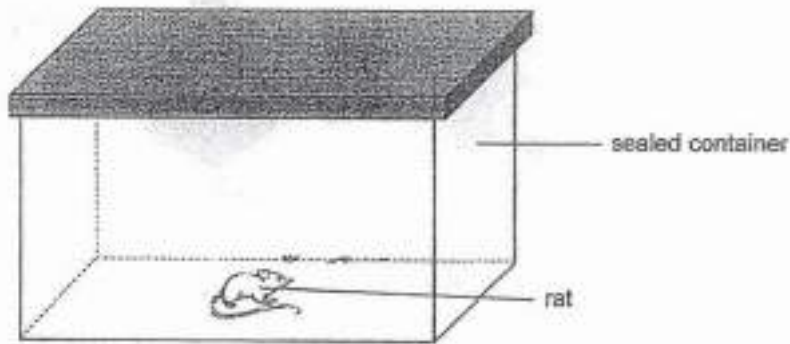
[Remove From Test](#)

Question 12

Primary 5 Science » Primary 5 Science (Term 2)

2 pts

Amelia caught a rat and kept it in a huge sealed container as shown below.



Which of the following shows a possible change in the composition of air in the container after one day?

- A)

| Amount of nitrogen | Amount of oxygen | Amount of carbon dioxide | Amount of water vapour |
|--------------------|------------------|--------------------------|------------------------|
| remains the same | decreases | increases | remains the same |
- ✓ B)

| Amount of nitrogen | Amount of oxygen | Amount of carbon dioxide | Amount of water vapour |
|--------------------|------------------|--------------------------|------------------------|
| remains the same | decreases | increases | increases |
- C)

| Amount of nitrogen | Amount of oxygen | Amount of carbon dioxide | Amount of water vapour |
|--------------------|------------------|--------------------------|------------------------|
| decreases | decreases | increases | increases |
- D)

| Amount of nitrogen | Amount of oxygen | Amount of carbon dioxide | Amount of water vapour |
|--------------------|------------------|--------------------------|------------------------|
| decreases | increases | increases | remains the same |

Question Type: Multiple Choice
Randomize Answers: No
Date Added: Fri 3rd Sep 2021
Last Modified: N/A
QID#: 28,903,179

[Answers](#) | [Edit](#) | [Duplicate](#) | [Used In](#) | [Reorder](#)

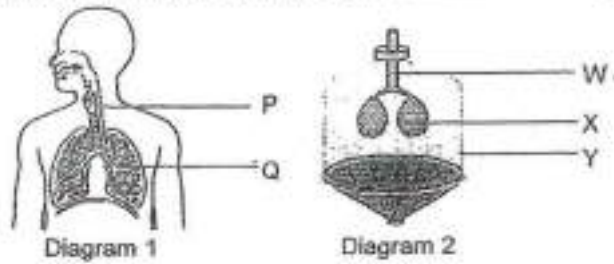
[Remove From Test](#)

Question 13

Primary 5 Science » Primary 5 Science (Term 2)

2 pts

Study the human respiratory system in diagram 1 and model in diagram 2.



Which of the following correctly matches the part in Diagram 1 to that in Diagram 2 and to its function in the respiratory system?

- A)

| Part | Part | Function |
|------|------|--|
| P | W | becomes smaller to allow air to leave the body |
- B)

| Part | Part | Function |
|------|------|----------------------------|
| P | X | warms and moistens the air |
- ✓ C)

| Part | Part | Function |
|------|------|--------------------------|
| Q | X | allows exchange of gases |
- D)

| Part | Part | Function |
|------|------|---|
| Q | Y | becomes bigger to allow air to enter the body |

Question Type: Multiple Choice
 Randomize Answers: No
 Date Added: Fri 3rd Sep 2021
 Last Modified: N/A
 QID#: 28,903,193

[Answers](#) | [Edit](#) | [Duplicate](#) | [Used In](#) | [Reorder](#)

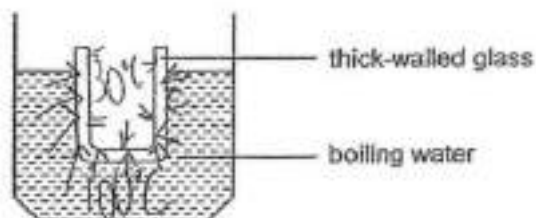
[Remove From Test](#)

Question 14

Primary 5 Science » Primary 5 Science (Term 2)

2 pts

Jonas took a cold thick-walled glass from a refrigerator and placed it in boiling water as shown below. The surrounding temperature of the room was 30°C.



Which of the following best explains why the glass cracked after a few minutes?

- ✓ A) The outer glass wall expanded more than the inner glass wall.
- B) Both the inner and outer glass walls gained heat from the boiling water.

- C) The glass lost heat to the refrigerator and gained heat from the boiling water.
- D) The outer glass wall gained heat from the surrounding while the inner glass wall lost heat to the surrounding.

Question Type: Multiple Choice
Randomize Answers: No
Date Added: Fri 3rd Sep 2021
Last Modified: N/A
QID#: 28,903,200

[Answers](#) | [Edit](#) | [Duplicate](#) | [Used In](#) | [Reorder](#)

[Remove From Test](#)

Question 15

Primary 5 Science » Primary 5 Science (Term 2)

2 pts

The table below shows the melting point and boiling point of four substances.

| Substance | Melting point (°C) | Boiling point (°C) |
|-----------|--------------------|--------------------|
| A | 0 | 100 |
| B | 44 | 280 |
| C | 63 | 762 |
| D | 179 | 1372 |

Which substance will be a solid at 100°C?

- A) A
B) B
C) C
✓ D) D

Question Type: Multiple Choice
Randomize Answers: No
Date Added: Fri 3rd Sep 2021
Last Modified: N/A
QID#: 28,903,258

[Answers](#) | [Edit](#) | [Duplicate](#) | [Used In](#) | [Reorder](#)

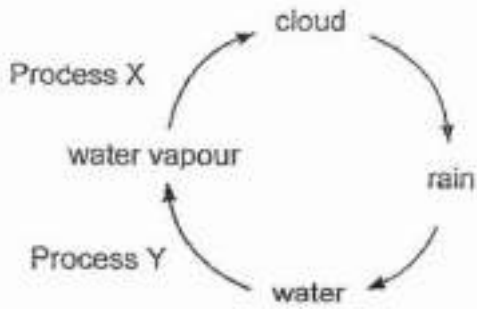
[Remove From Test](#)

Question 16

Primary 5 Science » Primary 5 Science (Term 2)

2 pts

The diagram below shows the water cycle.



What is Process X and is it a heat gain or heat loss for Process Y?

- A)

| Process X | Is it a heat gain or heat loss for Process Y? |
|-------------|---|
| evaporation | heat loss |

- B)

| Process X | Is it a heat gain or heat loss for Process Y? |
|-------------|---|
| evaporation | heat gain |

- C)

| Process X | Is it a heat gain or heat loss for Process Y? |
|--------------|---|
| condensation | heat loss |

- ✓ D)

| Process X | Is it a heat gain or heat loss for Process Y? |
|--------------|---|
| condensation | heat gain |

Question Type: Multiple Choice
 Randomize Answers: No
 Date Added: Fri 3rd Sep 2021
 Last Modified: N/A
 QID#: 28,903,267

[Answers](#) |
 [Edit](#) |
 [Duplicate](#) |
 [Used In](#) |
 [Reorder](#)

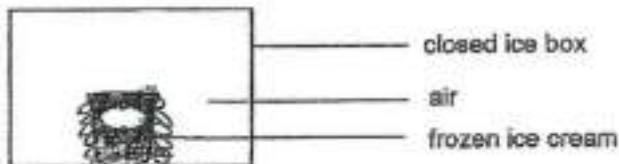
[Remove From Test](#)

Question 17

Primary 5 Science » Primary 5 Science (Term 2)

2 pts

A pint of frozen ice-cream is placed in an ice box as shown below.



What will happen to the temperature of the air and the amount of water vapour in the air within the ice box after ten minutes?

- A)

| Temperature of air | Amount of water vapour in the air |
|--------------------|-----------------------------------|
| increase | increase |

| | |
|--|--|
| | |
|--|--|

- B)

| Temperature of air | Amount of water vapour in the air |
|--------------------|-----------------------------------|
| increase | decrease |
- C)

| Temperature of air | Amount of water vapour in the air |
|--------------------|-----------------------------------|
| decrease | increase |
- ✓ D)

| Temperature of air | Amount of water vapour in the air |
|--------------------|-----------------------------------|
| decrease | decrease |

Question Type: Multiple Choice
Randomize Answers: No
Date Added: Fri 3rd Sep 2021
Last Modified: N/A
QID#: 28,903,271

[Answers](#) | [Edit](#) | [Duplicate](#) | [Used In](#) | [Reorder](#)

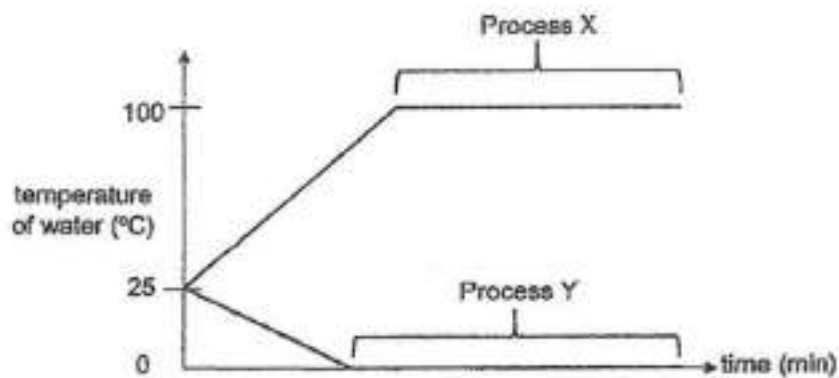
[Remove From Test](#)

Question 18

Primary 5 Science » Primary 5 Science (Term 2)

2 pts

The graph below shows water going through two processes, X and Y.



Which of the following statements about the two processes, X and Y, is correct?

- A) Both processes, X and Y, involve heat gain.
- ✓ B) Both processes, X and Y, occur at fixed temperatures.
- C) Process X involves a change in state while Process Y does not.
- D) Process X involves heat loss while Process Y involves heat gain.

Question Type: Multiple Choice
Randomize Answers: No
Date Added: Fri 3rd Sep 2021
Last Modified: N/A
QID#: 28,903,286

[Answers](#) | [Edit](#) | [Duplicate](#) | [Used In](#) | [Reorder](#)

[Remove From Test](#)

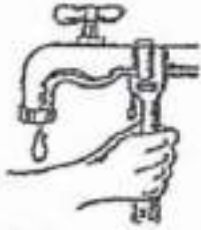
Question 19

Primary 5 Science » Primary 5 Science (Term 2)

2 pts

Which of the following actions shows water being conserved?

✓ A)



fixing a leaking tap

B)



playing with a water gun

C)



washing face with a running tap

D)



watering plants with a running hose

Question Type: Multiple Choice
Randomize Answers: No
Date Added: Fri 3rd Sep 2021
Last Modified: N/A
QID#: 28,903,288

[Answers](#) | [Edit](#) | [Duplicate](#) | [Used In](#) | [Reorder](#)

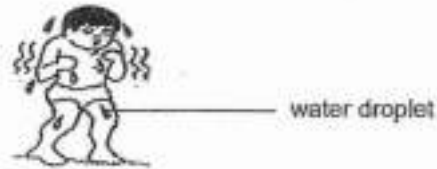
[Remove From Test](#)

Question 20

Primary 5 Science » Primary 5 Science (Term 2)

2 pts

Bryan went for a swim on a hot afternoon. When he came out of the cool water, he felt cold.



Why did he feel cold?

- A) He gained heat from the hot sun.
- ✓ B) Water gained heat from his body to evaporate.
- C) The surrounding air was colder than the water.
- D) Water vapour in the surrounding air condensed on him.

Question Type: Multiple Choice
Randomize Answers: No
Date Added: Fri 3rd Sep 2021
Last Modified: N/A
QID#: 28,903,294

[Answers](#) |
 [Edit](#) |
 [Duplicate](#) |
 [Used In](#) |
 [Reorder](#)

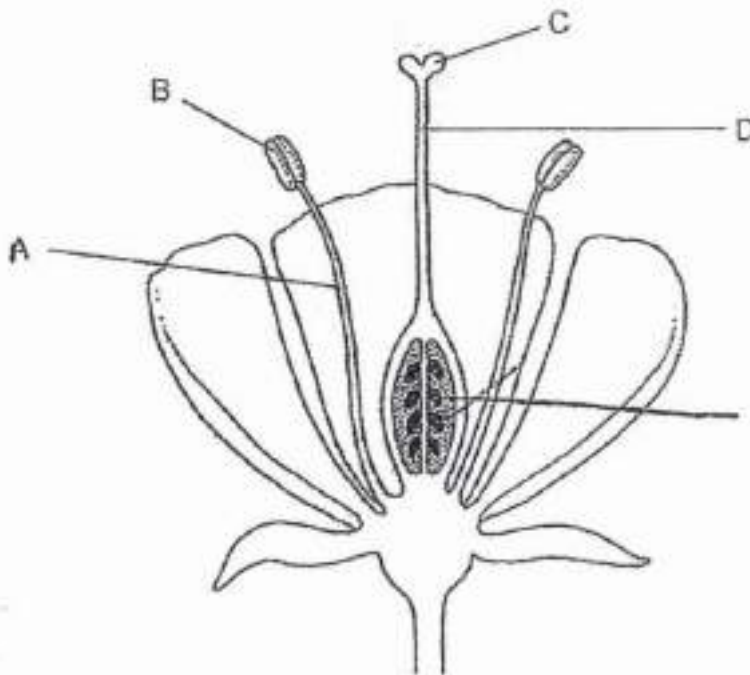
[Remove From Test](#)

Question 21

Primary 5 Science » Primary 5 Science (Term 2)

0.5 pts

The diagram below shows the cross section of a flower.



Name the part labelled A.

Accepted answers:

- ✓ filament

Question Type: Free Text
Date Added: Fri 3rd Sep 2021
Last Modified: N/A
QID#: 28,903,298

[Answers](#) | [Edit](#) | [Duplicate](#) | [Used In](#) | [Reorder](#)

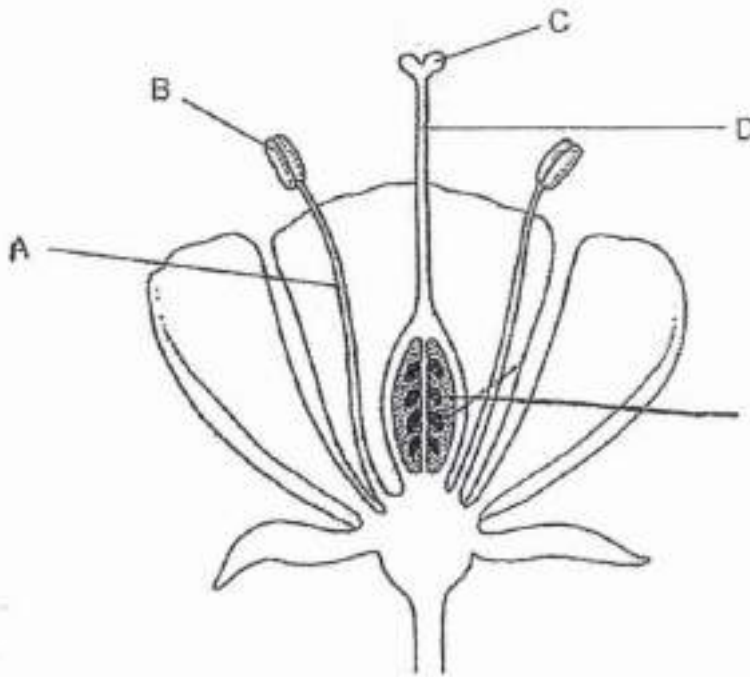
[Remove From Test](#)

Question 22

Primary 5 Science » Primary 5 Science (Term 2)

0.5 pts

The diagram below shows the cross section of a flower.



Name the part labelled B.

Accepted answers:

✓ anther

Question Type: Free Text
Date Added: Fri 3rd Sep 2021
Last Modified: N/A
QID#: 28,903,302

[Answers](#) | [Edit](#) | [Duplicate](#) | [Used In](#) | [Reorder](#)

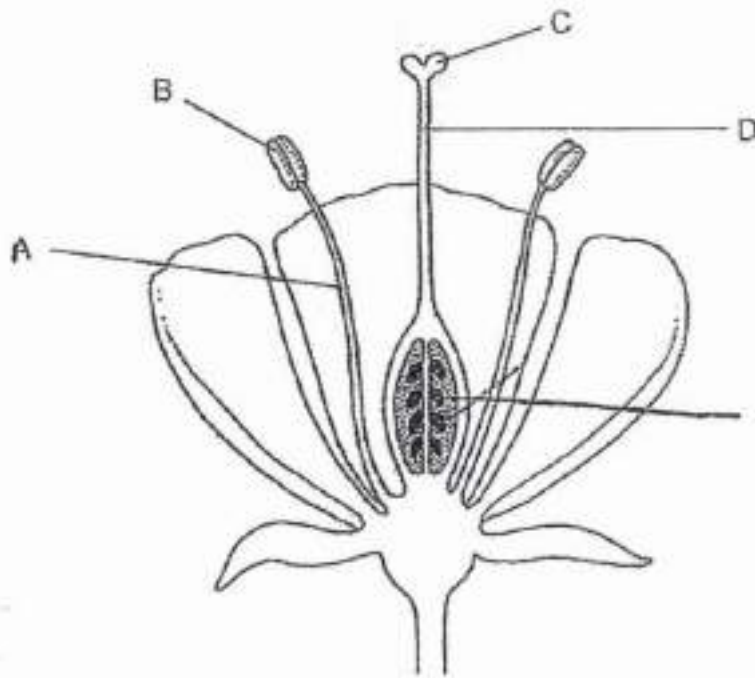
[Remove From Test](#)

Question 23

Primary 5 Science » Primary 5 Science (Term 2)

0.5 pts

The diagram below shows the cross section of a flower.



Name the part labelled C.

Accepted answers:

✓ stigma

Question Type: Free Text
Date Added: Fri 3rd Sep 2021
Last Modified: N/A
QID#: 28,903,304

[Answers](#) | [Edit](#) | [Duplicate](#) | [Used In](#) | [Reorder](#)

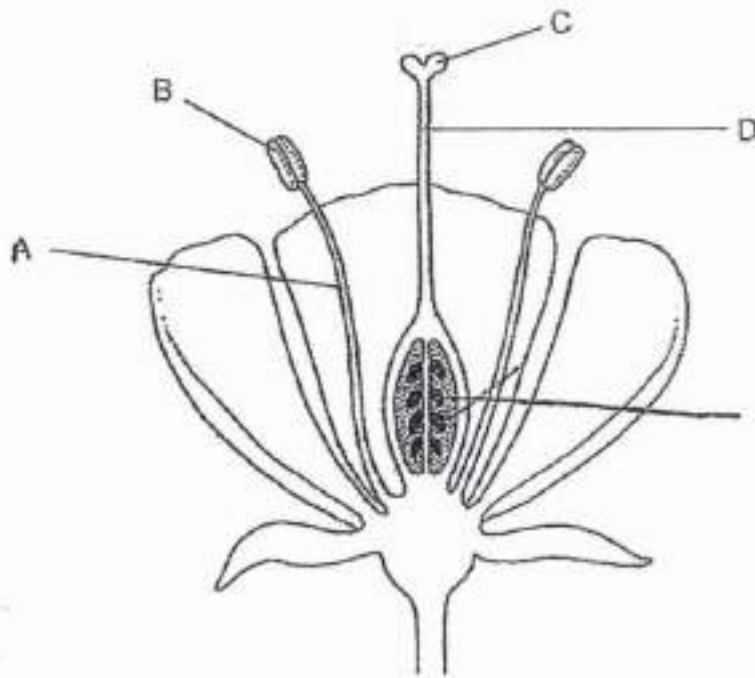
[Remove From Test](#)

Question 24

Primary 5 Science » Primary 5 Science (Term 2)

0.5 pts

The diagram below shows the cross section of a flower.



Name the part labelled D.

Accepted answers:

✓ style

Question Type: Free Text
Date Added: Fri 3rd Sep 2021
Last Modified: N/A
QID#: 28,903,306

[Answers](#) | [Edit](#) | [Duplicate](#) | [Used In](#) | [Reorder](#)

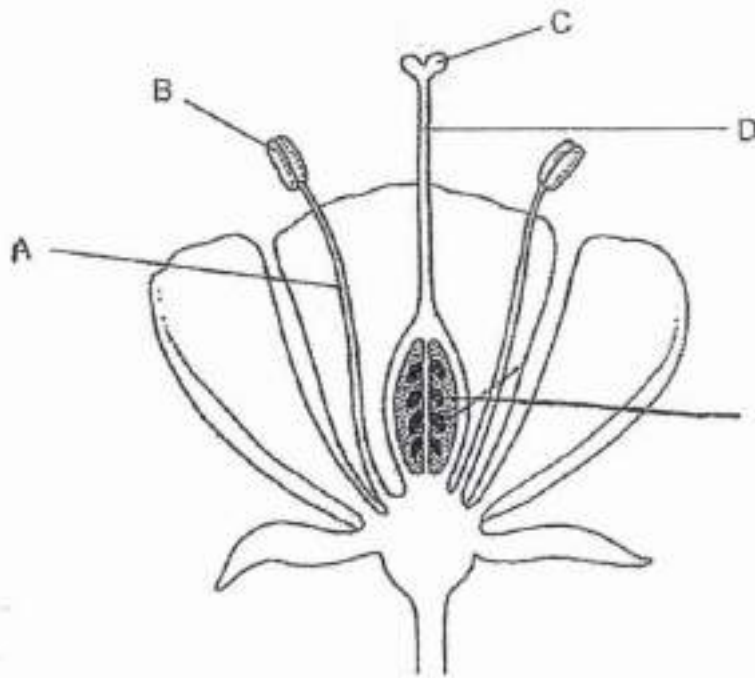
[Remove From Test](#)

Question 25

Primary 5 Science » Primary 5 Science (Term 2)

1 pt

The diagram below shows the cross section of a flower.



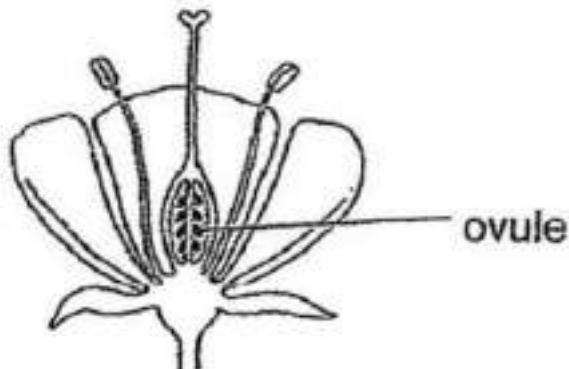
In the above diagram, identify the part that will develop into a seed after fertilisation. Label and name that part in the diagram. (1 mark)

Accepted answers:

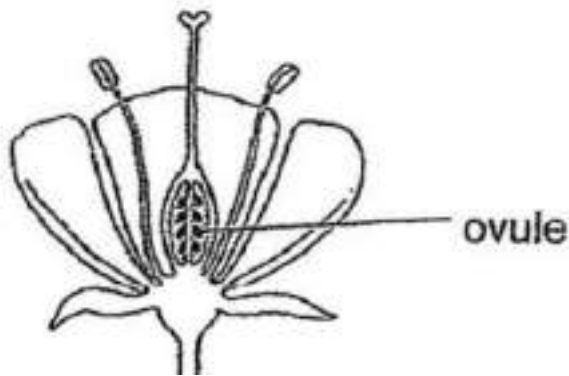
✓ Ovule

Question Type: Free Text
Date Added: Fri 3rd Sep 2021
Last Modified: N/A
QID#: 28,903,330

Correctly answered feedback



Incorrectly answered feedback



[Answers](#) |
 [Edit](#) |
 [Duplicate](#) |
 [Used In](#) |
 [Reorder](#)

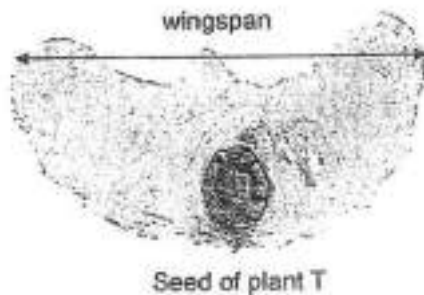
[Remove From Test](#)

Question 26

Primary 5 Science » Primary 5 Science (Term 2)

0 pts

On a windy day, Dylan observed the seeds from plant T fluttering in the air. He collected 3 seeds, A, B and C, with different wingspans and dropped them from a height of 8 m.



He measured the time taken for each seed to reach the ground. The results of his experiment are shown in the table below.

| Seed | Wingspan (cm) | Time taken to reach the ground (s) |
|------|---------------|------------------------------------|
| A | 8 | 4 |
| B | 10 | 8 |
| C | 13 | 12 |

What is the relationship between the wingspan of the seed and the time taken for the seed to reach the ground? (1 mark)

This question is designed for extended answers that parent/ teacher will have to assign and guide child to attempt after the test has been completed.

Grading: This question type is not graded on this system and will not affect the final score as it was designed in such a way that it requires manual assistance.

Question Type: Essay
Date Added: Fri 3rd Sep 2021
Last Modified: N/A
QID#: 28,903,342

Correctly answered feedback

As the wingspan of the seed increases/decreases, the time taken for the seed to reach the ground increases/decreases.

Incorrectly answered feedback

As the wingspan of the seed increases/decreases, the time taken for the seed to reach the ground increases/decreases.

[Answers](#) |
 [Edit](#) |
 [Duplicate](#) |
 [Used In](#) |
 [Reorder](#)

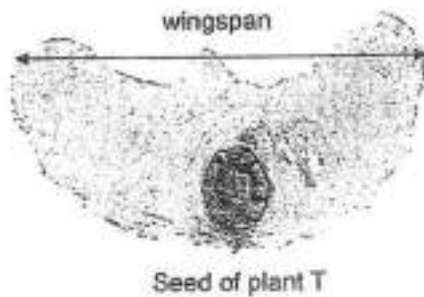
[Remove From Test](#)

Question 27

Primary 5 Science » Primary 5 Science (Term 2)

0 pts

On a windy day, Dylan observed the seeds from plant T fluttering in the air. He collected 3 seeds, A, B and C, with different wingspans and dropped them from a height of 8 m.



He measured the time taken for each seed to reach the ground. The results of his experiment are shown in the table below.

| Seed | Wingspan (cm) | Time taken to reach the ground (s) |
|------|---------------|------------------------------------|
| A | 8 | 4 |
| B | 10 | 8 |
| C | 13 | 12 |

Explain how having seeds with a longer wingspan would be advantageous to the reproduction of plant T. (2 marks)

This question is designed for extended answers that parent/ teacher will have to assign and guide child to attempt after the test has been completed.

Grading: This question type is not graded on this system and will not affect the final score as it was designed in such a way that it requires manual assistance.

Question Type: Essay
Date Added: Fri 3rd Sep 2021
Last Modified: N/A
QID#: 28,903,351

Correctly answered feedback

Seeds with longer wingspans can be dispersed further away from plant T thus preventing/reducing overcrowding/competition for space, sunlight, water or minerals.

Incorrectly answered feedback

Seeds with longer wingspans can be dispersed further away from plant T thus preventing/reducing overcrowding/competition for space, sunlight, water or minerals.

[Answers](#) |
 [Edit](#) |
 [Duplicate](#) |
 [Used In](#) |
 [Reorder](#)

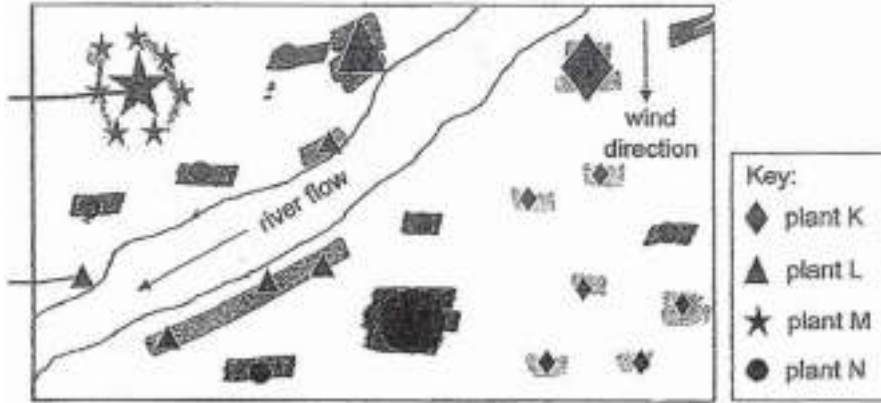
[Remove From Test](#)

Question 28

Primary 5 Science » Primary 5 Science (Term 2)

2 pts

The diagram below shows the locations of 4 types of plants, K, L, M, and N. The larger symbols indicate the parent plants and the smaller symbols indicate the young plants.



Based on the above diagram, identify the fruit/seed of plants K, L, M and N in the table below. (2 marks)

Clue **Match**

| Seed/ Fruit | Plant |
|-------------|-------|
| | M |

Points: +0.5 -0

| | |
|--|---|
| | K |
|--|---|

Points: +0.5 -0

| | |
|--|---|
| | L |
|--|---|

Points: +0.5 -0

| | |
|--|---|
| | N |
|--|---|

Points: +0.5 -0

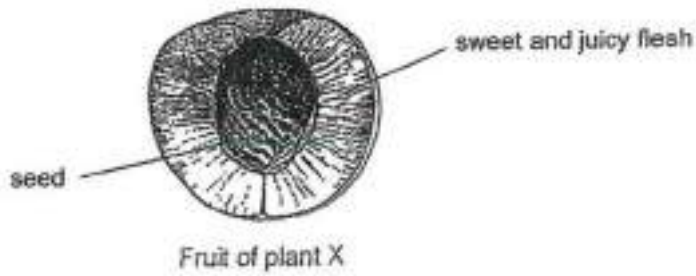
Question Type: Matching
Shuffle Mode: Shuffle Matches Only
Date Added: Fri 3rd Sep 2021
Last Modified: N/A
QID#: 28,903,384

Question 29

Primary 5 Science » Primary 5 Science (Term 2)

0 pts

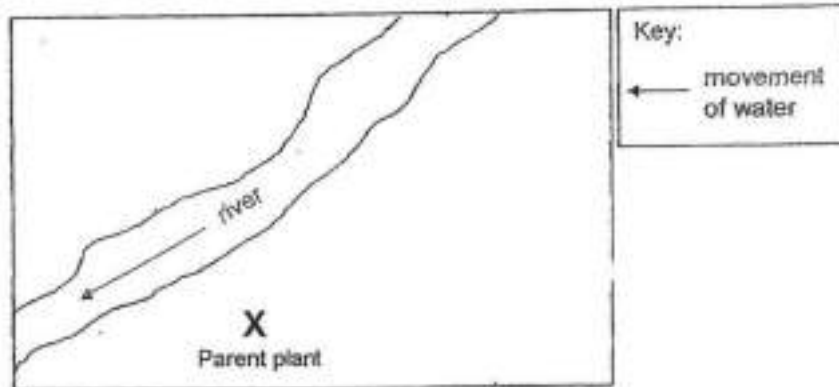
Study the picture of the fruit of plant X below.



The seed of plant X is dispersed by animal T. Animal T cannot swim or fly.

Parent plant X is grown a distance from a river as shown below. After a few years, young plants of X were seen.

A parent plant X is shown in the map below. Draw five more "X"s on the same map to show the possible locations of five young plants X where the seeds could be dispersed to. [1]



This question is designed for extended answers that parent/ teacher will have to assign and guide child to attempt after the test has been completed.

Grading: This question type is not graded on this system and will not affect the final score as it was designed in such a way that it requires manual assistance.

Question Type: Essay
 Date Added: Fri 3rd Sep 2021
 Last Modified: N/A
 QID#: 28,903,426

Correctly answered feedback

Any 5 'X' marked on the right side of the river

Incorrectly answered feedback

Any 5 'X' marked on the right side of the river

[Answers](#) | [Edit](#) | [Duplicate](#) | [Used In](#) | [Reorder](#)

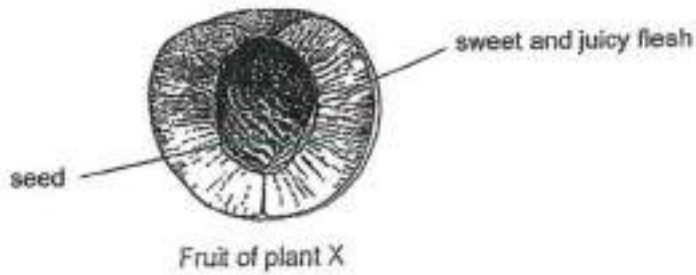
[Remove From Test](#)

Question 30

Primary 5 Science » Primary 5 Science (Term 2)

0 pts

Study the picture of the fruit of plant X below.



The seed of plant X is dispersed by animal T. Animal T cannot swim or fly.

Parent plant X is grown a distance from a river as shown below. After a few years, young plants of X were seen.

Describe how the young plants reached these new locations. (1 mark)

This question is designed for extended answers that parent/ teacher will have to assign and guide child to attempt after the test has been completed.

Grading: This question type is not graded on this system and will not affect the final score as it was designed in such a way that it requires manual assistance.

Question Type: Essay
Date Added: Fri 3rd Sep 2021
Last Modified: N/A
QID#: 28,903,434

Correctly answered feedback

Animal T eats/swallow the fruit/flesh and passes out the seed away/throws the seed away from plant X.

Incorrectly answered feedback

Animal T eats/swallow the fruit/flesh and passes out the seed away/throws the seed away from plant X.

[Answers](#) | [Edit](#) | [Duplicate](#) | [Used In](#) | [Reorder](#)

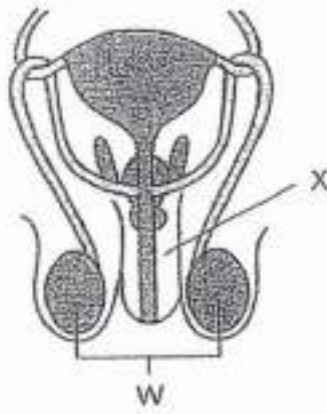
[Remove From Test](#)

Question 31

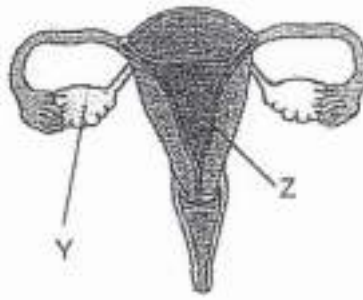
Primary 5 Science » Primary 5 Science (Term 2)

1 pt

The diagrams below show the male and female reproductive systems.



male reproductive system



female reproductive system

Name part Y.

Accepted answers:

✓ Ovary

Question Type: Free Text
Date Added: Fri 3rd Sep 2021
Last Modified: N/A
QID#: 28,903,440

[Answers](#) | [Edit](#) | [Duplicate](#) | [Used In](#) | [Reorder](#)

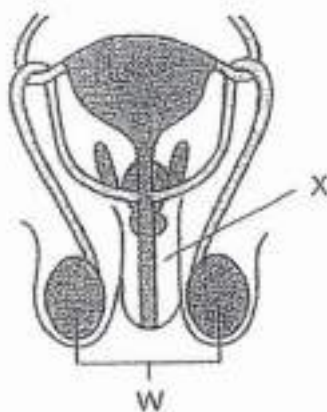
[Remove From Test](#)

Question 32

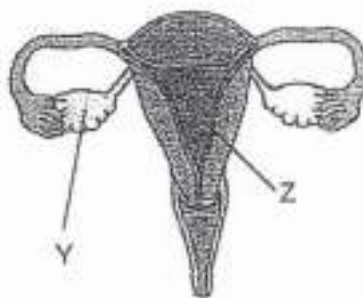
Primary 5 Science » Primary 5 Science (Term 2)

0 pts

The diagrams below show the male and female reproductive systems.



male reproductive system



female reproductive system

What is the function of part W? (1 mark)

This question is designed for extended answers that parent/ teacher will have to assign and guide child to attempt after the test has been completed.

Grading: This question type is not graded on this system and will not affect the final score as it was designed in such a way that it requires manual assistance.

Question Type: Essay
Date Added: Fri 3rd Sep 2021
Last Modified: N/A
QID#: 28,903,445

Correctly answered feedback

Produce/store sperms/male reproductive cells

Incorrectly answered feedback

Produce/store sperms/male reproductive cells

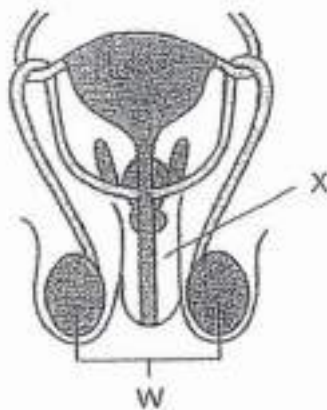
[Answers](#) | [Edit](#) | [Duplicate](#) | [Used In](#) | [Reorder](#)

[Remove From Test](#)**Question 33**

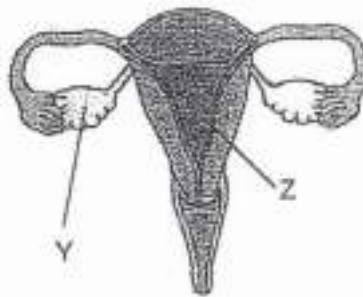
Primary 5 Science » Primary 5 Science (Term 2)

1 pt

The diagrams below show the male and female reproductive systems.



male reproductive system



female reproductive system

At which part, W, X, Y or Z will an unborn baby develop?

Accepted answers:

- ✓ Part Z
- ✓ Z

Question Type: Free Text
Date Added: Fri 3rd Sep 2021
Last Modified: N/A
QID#: 28,903,448

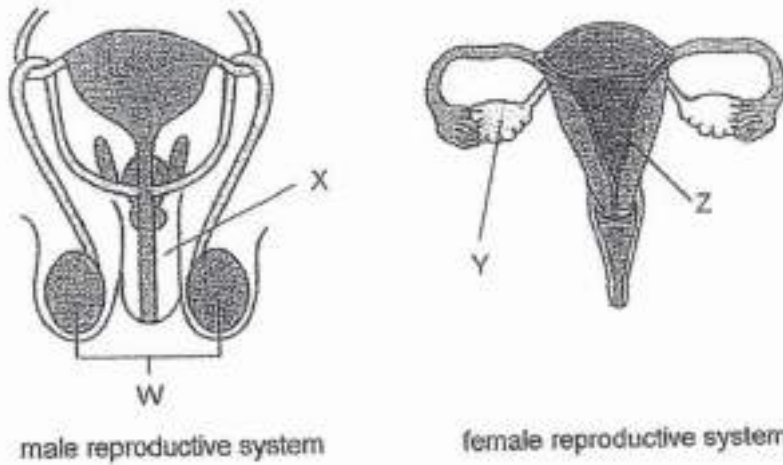
[Answers](#) | [Edit](#) | [Duplicate](#) | [Used In](#) | [Reorder](#)

[Remove From Test](#)**Question 34**

Primary 5 Science » Primary 5 Science (Term 2)

1 pt

The diagrams below show the male and female reproductive systems.



Which part of a flower has the same function as part W?

Accepted answers:

✓ Anther

Question Type: Free Text
 Date Added: Fri 3rd Sep 2021
 Last Modified: N/A
 QID#: 28,903,451

[Answers](#) |
 [Edit](#) |
 [Duplicate](#) |
 [Used In](#) |
 [Reorder](#)

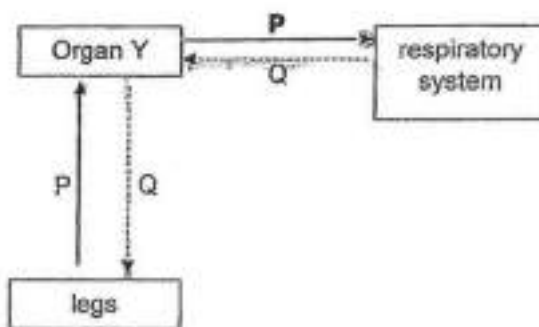
[Remove From Test](#)

Question 35

Primary 5 Science » Primary 5 Science (Term 2)

0.5 pts

The diagram below shows how gas P and gas Q are transported in the human body.



Identify gas P.

Accepted answers:

✓ carbon dioxide

Question Type: Free Text
 Date Added: Fri 3rd Sep 2021
 Last Modified: N/A

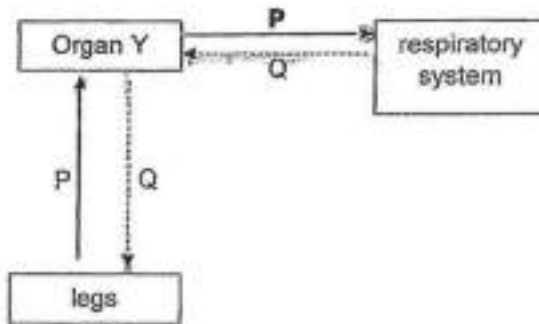
QID#: 28,903,457

[Answers](#) | [Edit](#) | [Duplicate](#) | [Used In](#) | [Reorder](#)
[Remove From Test](#)**Question 36**

Primary 5 Science » Primary 5 Science (Term 2)

0.5 pts

The diagram below shows how gas P and gas Q are transported in the human body.



Identify gas Q.

Accepted answers:

✓ oxygen

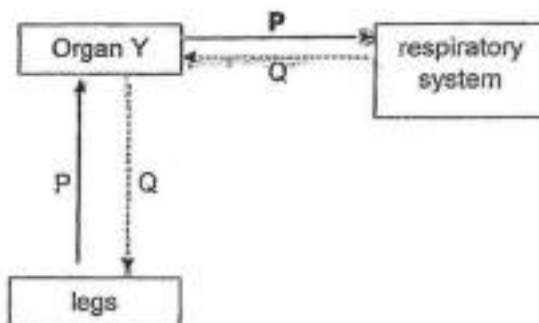
Question Type: Free Text
Date Added: Fri 3rd Sep 2021
Last Modified: N/A
QID#: 28,903,460

[Answers](#) | [Edit](#) | [Duplicate](#) | [Used In](#) | [Reorder](#)
[Remove From Test](#)**Question 37**

Primary 5 Science » Primary 5 Science (Term 2)

1 pt

The diagram below shows how gas P and gas Q are transported in the human body.



Identify organ Y.

Accepted answers:

✓ heart

Question Type: Free Text
Date Added: Fri 3rd Sep 2021
Last Modified: N/A
QID#: 28,903,464

[Answers](#) |
 [Edit](#) |
 [Duplicate](#) |
 [Used In](#) |
 [Reorder](#)

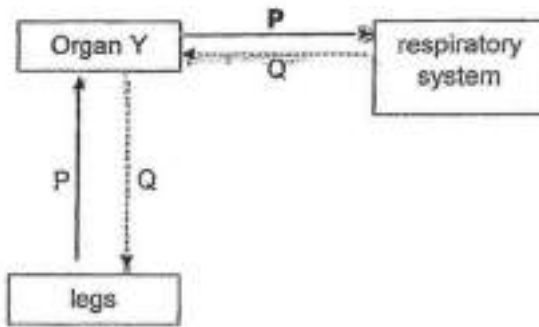
[Remove From Test](#)

Question 38

Primary 5 Science » Primary 5 Science (Term 2)

0 pts

The diagram below shows how gas P and gas Q are transported in the human body.



A man started running and noticed his breathing rate and heart rate increase. Describe how the increased rates affected the amount of gas Q reaching his legs. (1 marks)

| Rate | How the rates affected the amount of gas Q reaching his legs |
|----------------|--|
| Breathing rate | |

This question is designed for extended answers that parent/ teacher will have to assign and guide child to attempt after the test has been completed.

Grading: This question type is not graded on this system and will not affect the final score as it was designed in such a way that it requires manual assistance.

Question Type: Essay
Date Added: Fri 3rd Sep 2021
Last Modified: N/A
QID#: 28,903,475

Correctly answered feedback

More oxygen (from the air/surrounding) is taken in/inhaled so that more oxygen is absorbed at the lungs, hence more oxygen/gas Q reaches the legs.

Incorrectly answered feedback

More oxygen (from the air/surrounding) is taken in/inhaled so that more oxygen is absorbed at the lungs, hence more oxygen/gas Q reaches the legs.

[Answers](#) |
 [Edit](#) |
 [Duplicate](#) |
 [Used In](#) |
 [Reorder](#)

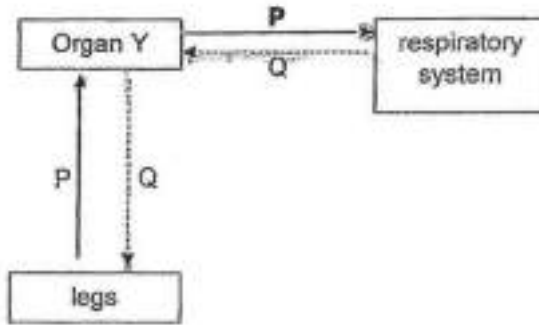
[Remove From Test](#)

Question 39

Primary 5 Science » Primary 5 Science (Term 2)

0 pts

The diagram below shows how gas P and gas Q are transported in the human body.



A man started running and noticed his breathing rate and heart rate increase. Describe how the increased rates affected the amount of gas Q reaching his legs. (1 mark)

| Rate | How the rates affected the amount of gas Q reaching his legs |
|------------|--|
| Heart rate | |

This question is designed for extended answers that parent/ teacher will have to assign and guide child to attempt after the test has been completed.

Grading: This question type is not graded on this system and will not affect the final score as it was designed in such a way that it requires manual assistance.

Question Type: Essay
Date Added: Fri 3rd Sep 2021
Last Modified: N/A
QID#: 28,903,482

Correctly answered feedback

Heart pumps the blood faster so that more oxygen/gas Q (is transported and) reaches the legs.

Incorrectly answered feedback

Heart pumps the blood faster so that more oxygen/gas Q (is transported and) reaches the legs.

[Answers](#) | [Edit](#) | [Duplicate](#) | [Used In](#) | [Reorder](#)

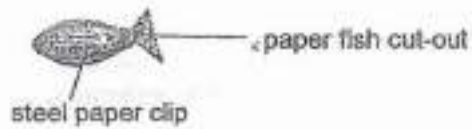
[Remove From Test](#)

Question 40

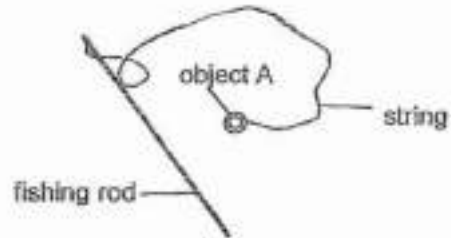
Primary 5 Science » Primary 5 Science (Term 2)

1 pt

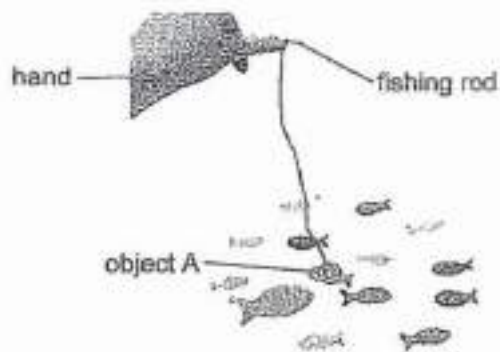
Jenny fixed a steel paper clip onto each paper fish cut-out she made.



She also tied object A to the end of the string of a fishing rod.



She brought object A close to the fish cut-outs as shown below.



Jenny observed a fish cut-out moved towards object A and was stuck to object A when she lifted up the fishing rod.

State what object A is. (1 mark)

Accepted answers:

✓ Magnet

Question Type: Free Text
 Date Added: Fri 3rd Sep 2021
 Last Modified: N/A
 QID#: 28,903,485

[Answers](#) | [Edit](#) | [Duplicate](#) | [Used In](#) | [Reorder](#)

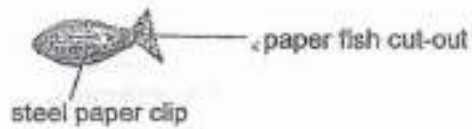
[Remove From Test](#)

Question 41

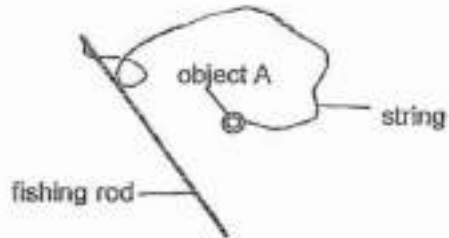
Primary 5 Science » Primary 5 Science (Term 2)

0 pts

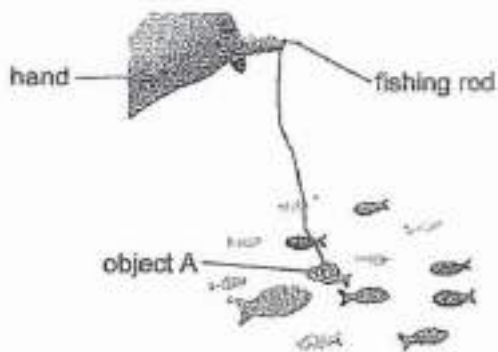
Jenny fixed a steel paper clip onto each paper fish cut-out she made.



She also tied object A to the end of the string of a fishing rod.



She brought object A close to the fish cut-outs as shown below.



Jenny observed a fish cut-out moved towards object A and was stuck to object A when she lifted up the fishing rod.

Explain why the fish cut-out moved towards object A. (1 mark)

Question Type: Essay
Date Added: Fri 3rd Sep 2021
Last Modified: N/A
QID#: 28,903,490

Correctly answered feedback

The steel paper clip is a magnetic material hence it was attracted to the magnet/object A.

Incorrectly answered feedback

The steel paper clip is a magnetic material hence it was attracted to the magnet/object A.

[Answers](#) | [Edit](#) | [Duplicate](#) | [Used In](#) | [Reorder](#)

[Remove From Test](#)

Question 42

Primary 5 Science » Primary 5 Science (Term 2)

1 pt

Stacy rested at a picnic table shown below. Whenever it was sunny or rainy, she opened the umbrella that was attached to the table.



picnic table with closed umbrella



picnic table with opened umbrella

Based on the above information, fill in the blanks below with the correct property or reason a material must have in order to make part X of the umbrella. [2]

| Property | Reason |
|----------|--------------------------------------|
| | It keeps the user dry on rainy days. |

Accepted answers:

✓ Waterproof

Question Type: Free Text
 Date Added: Fri 3rd Sep 2021
 Last Modified: N/A
 QID#: 28,903,494

[Answers](#) | [Edit](#) | [Duplicate](#) | [Used In](#) | [Reorder](#)

[Remove From Test](#)

Question 43

Primary 5 Science » Primary 5 Science (Term 2)

0 pts

Stacy rested at a picnic table shown below. Whenever it was sunny or rainy, she opened the umbrella that was attached to the table.



picnic table with closed umbrella



picnic table with opened umbrella

Based on the above information, fill in the blanks below with the correct property or reason a material must have in order to make part X of the umbrella. [2]

| Property | Reason |
|--------------------------------------|--------|
| Does not allow light to pass through | |

This question is designed for extended answers that parent/ teacher will have to assign and guide child to attempt after the test has been completed.

Grading: This question type is not graded on this system and will not affect the final score as it was designed in such a way that it requires manual assistance.

Question Type: Essay
Date Added: Fri 3rd Sep 2021
Last Modified: N/A
QID#: 28,903,533

Correctly answered feedback

The umbrella can provide shade on a sunny day.

OR

The person is cooler when he/she is under the umbrella on a sunny day.

Incorrectly answered feedback

The umbrella can provide shade on a sunny day.

OR

The person is cooler when he/she is under the umbrella on a sunny day.

[Answers](#) |
 [Edit](#) |
 [Duplicate](#) |
 [Used In](#) |
 [Reorder](#)

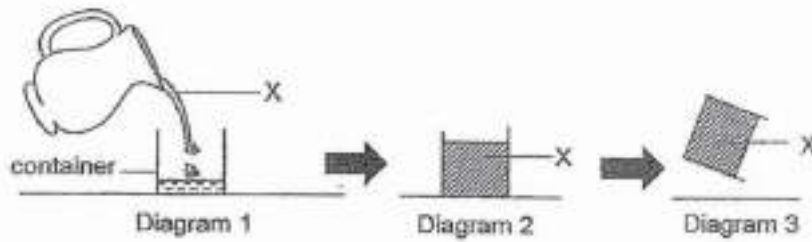
[Remove From Test](#)

Question 44

Primary 5 Science » Primary 5 Science (Term 2)

1 pt

Mara poured substance X into a container as shown in Diagram 1. She then let X freeze as shown in Diagram 2. She took out the container from the freezer after five hours and observed what happened to X when she tried tilting it as shown in Diagram 3.



Fill in the boxes to show the change of state in X.



Accepted answers:

- ✓ Liquid state, Solid state
- ✓ liquid state,solid state
- ✓ liquid state solid state
- ✓ liquid state/solid state
- ✓ liquid state / solid state

Question Type: Free Text
Date Added: Fri 3rd Sep 2021
Last Modified: N/A
QID#: 28,903,545

[Answers](#) | [Edit](#) | [Duplicate](#) | [Used In](#) | [Reorder](#)

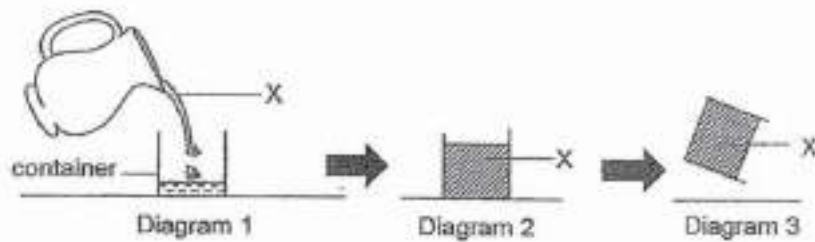
[Remove From Test](#)

Question 45

Primary 5 Science » Primary 5 Science (Term 2)

0 pts

Mara poured substance X into a container as shown in Diagram 1. She then let X freeze as shown in Diagram 2. She took out the container from the freezer after five hours and observed what happened to X when she tried tilting it as shown in Diagram 3.



Explain how the different properties of X at different states allowed Mara to obtain the shape of X after freezing as shown above. (2 marks)

This question is designed for extended answers that parent/ teacher will have to assign and guide child to attempt after the test has been completed.

Grading: This question type is not graded on this system and will not affect the final score as it was designed in such a way that it requires manual assistance.

Question Type: Essay
Date Added: Fri 3rd Sep 2021
Last Modified: N/A
QID#: 28,903,553

Correctly answered feedback

X does not have a definite/ fixed shape when it was a liquid, hence it takes the shape of the container.

X freezes / solidifies after being cooled and solids have definite/ fixed shapes, hence it stays in that shape.

Incorrectly answered feedback

X does not have a definite/ fixed shape when it was a liquid, hence it takes the shape of the container.

X freezes / solidifies after being cooled and solids have definite/ fixed shapes, hence it stays in that shape.

[Answers](#) | [Edit](#) | [Duplicate](#) | [Used In](#) | [Reorder](#)

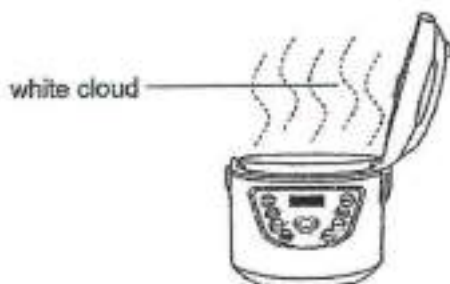
[Remove From Test](#)

Question 46

Primary 5 Science » Primary 5 Science (Term 2)

1 pt

Janet wanted to scoop some hot rice for dinner. When she opened the lid of the rice cooker, a "white cloud" formed as shown below.



What is the "white cloud"?

Accepted answers:

- ✓ Water droplets
- ✓ Tiny water droplets

Question Type: Free Text
Date Added: Fri 3rd Sep 2021
Last Modified: N/A
QID#: 28,903,557

Correctly answered feedback

(Tiny) Water droplets

Incorrectly answered feedback

(Tiny) Water droplets

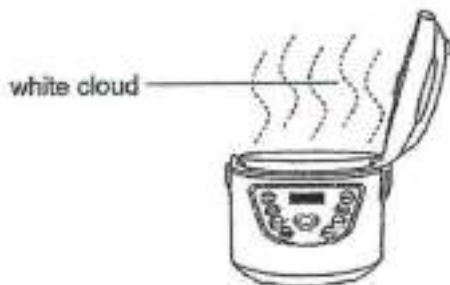
[Answers](#) | [Edit](#) | [Duplicate](#) | [Used In](#) | [Reorder](#)

[Remove From Test](#)**Question 47**

Primary 5 Science » Primary 5 Science (Term 2)

0 pts

Janet wanted to scoop some hot rice for dinner. When she opened the lid of the rice cooker, a "white cloud" formed as shown below.



Explain how the "white cloud" was formed. (2 marks)

This question is designed for extended answers that parent/ teacher will have to assign and guide child to attempt after the test has been completed.

Grading: This question type is not graded on this system and will not affect the final score as it was designed in such a way that it requires manual assistance.

Question Type: Essay
Date Added: Fri 3rd Sep 2021
Last Modified: N/A
QID#: 28,903,562

Correctly answered feedback

Warmer water vapour from the cooked rice/in rice cooker came into contact with cooler surrounding air, lost heat and condensed into water droplets.

Incorrectly answered feedback

Warmer water vapour from the cooked rice/in rice cooker came into contact with cooler surrounding air, lost heat and condensed into water droplets.

[Answers](#) | [Edit](#) | [Duplicate](#) | [Used In](#) | [Reorder](#)

[Remove From Test](#)

Question 48

Primary 5 Science » Primary 5 Science (Term 2)

0 pts

Janet wanted to scoop some hot rice for dinner. When she opened the lid of the rice cooker, a "white cloud" formed as shown below.



The "white cloud" disappeared after some time and she was able to scoop the rice. Give a reason why the "white cloud" disappeared. (1 mark)

This question is designed for extended answers that parent/ teacher will have to assign and guide child to attempt after the test has been completed.

Grading: This question type is not graded on this system and will not affect the final score as it was designed in such a way that it requires manual assistance.

Question Type: Essay
Date Added: Fri 3rd Sep 2021
Last Modified: N/A
QID#: 28,903,569

Correctly answered feedback

The mist evaporated / turned into water vapour.

Incorrectly answered feedback

The mist evaporated / turned into water vapour.

[Answers](#) | [Edit](#) | [Duplicate](#) | [Used In](#) | [Reorder](#)

[Remove From Test](#)

Question 49

Primary 5 Science » Primary 5 Science (Term 2)

0 pts

Janet wanted to scoop some hot rice for dinner. When she opened the lid of the rice cooker, a "white cloud" formed as shown below.



Once the rice was fully cooked, Janet's mum turned off the switch. She also told Janet to close the lid of the rice cooker once she had finished scooping the rice. Explain how this action helps to keep the rice in the rice cooker warm. (1 mark)

This question is designed for extended answers that parent/ teacher will have to assign and guide child to attempt after the test has been completed.

Grading: This question type is not graded on this system and will not affect the final score as it was designed in such a way that it requires manual assistance.

Question Type: Essay
Date Added: Fri 3rd Sep 2021
Last Modified: N/A
QID#: 28,903,576

Correctly answered feedback

It prevents heat loss from the rice to the surroundings.

OR

Hot water vapour/steam was trapped in the rice cooker.

Incorrectly answered feedback

It prevents heat loss from the rice to the surroundings.

OR

Hot water vapour/steam was trapped in the rice cooker.

[Answers](#) | [Edit](#) | [Duplicate](#) | [Used In](#) | [Reorder](#)

[Remove From Test](#)